

Who Needs Emergency Management? Fire Departments!

Eastside Fire & Rescue
Issaquah, WA

Cat Robinson,
Emergency Management
Coordinator

Greg Bawden,
Emergency Manager

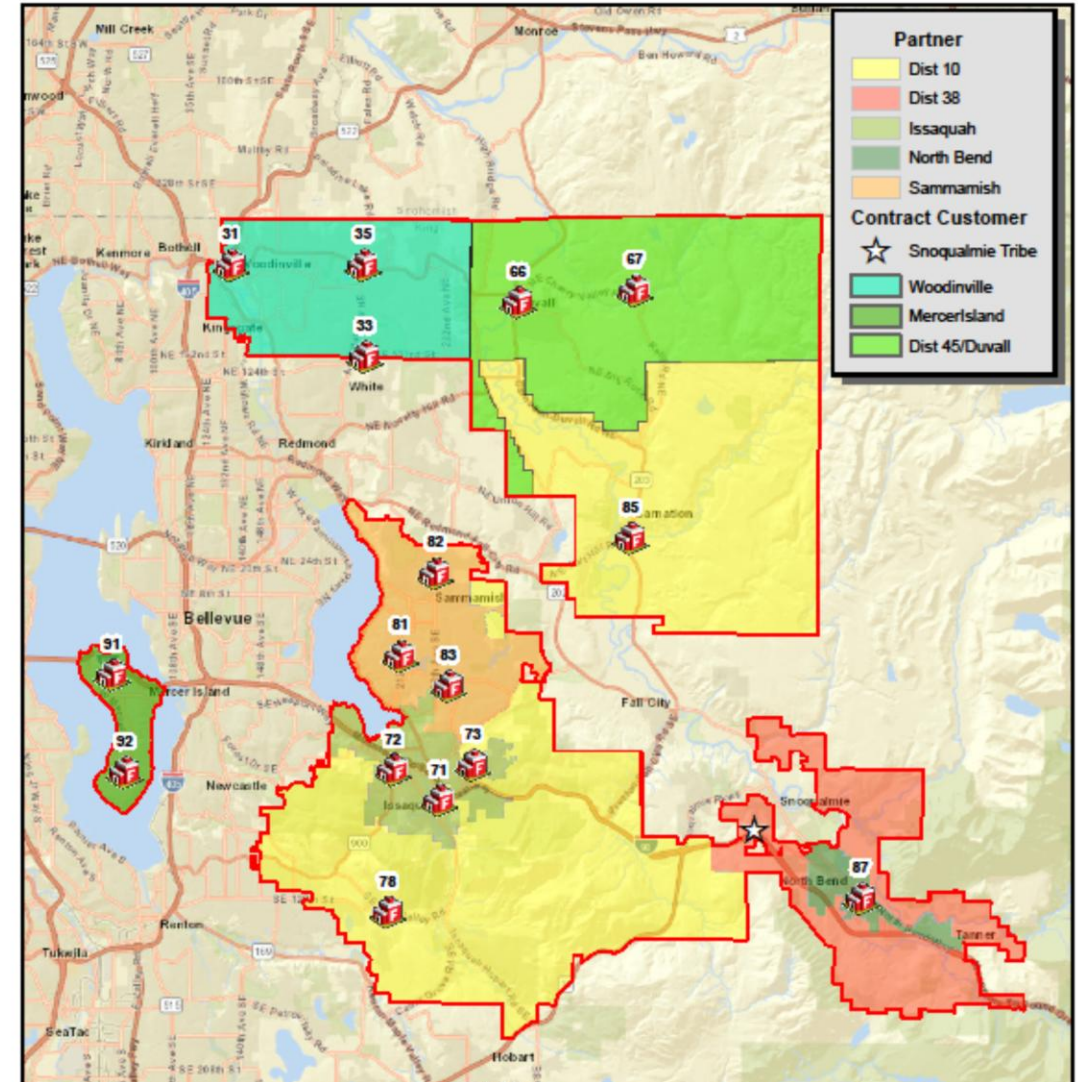


Excellence in Service • Dedication to Community

PROUDLY SERVING: ISSAQUAH, NORTH BEND, SAMMAMISH, THE SNOQUALAMIE TRIBE, MERCER ISLAND, FIRE DISTRICTS 10, 38, AND WOODINVILLE FIRE & RESCUE

Eastside Fire & Rescue

- Non-profit corporation
- 16 staffed fire stations
- 7 cities
- Snoqualmie Tribe
- 4 fire districts
- 230 square miles
- 230,000 people



Excellence in Service • Dedication to Community

PROUDLY SERVING: ISSAQUAH, NORTH BEND, SAMMAMISH, THE SNOQUALMIE TRIBE, MERCER ISLAND, FIRE DISTRICTS 10, 38, AND WOODINVILLE FIRE & RESCUE

Not a traditional EM provider...

Cities and County have primary responsibility for EM in our service area

Our focus:

- agency preparedness
- partnerships with cities
- assist/support community preparedness



Excellence in Service • Dedication to Community

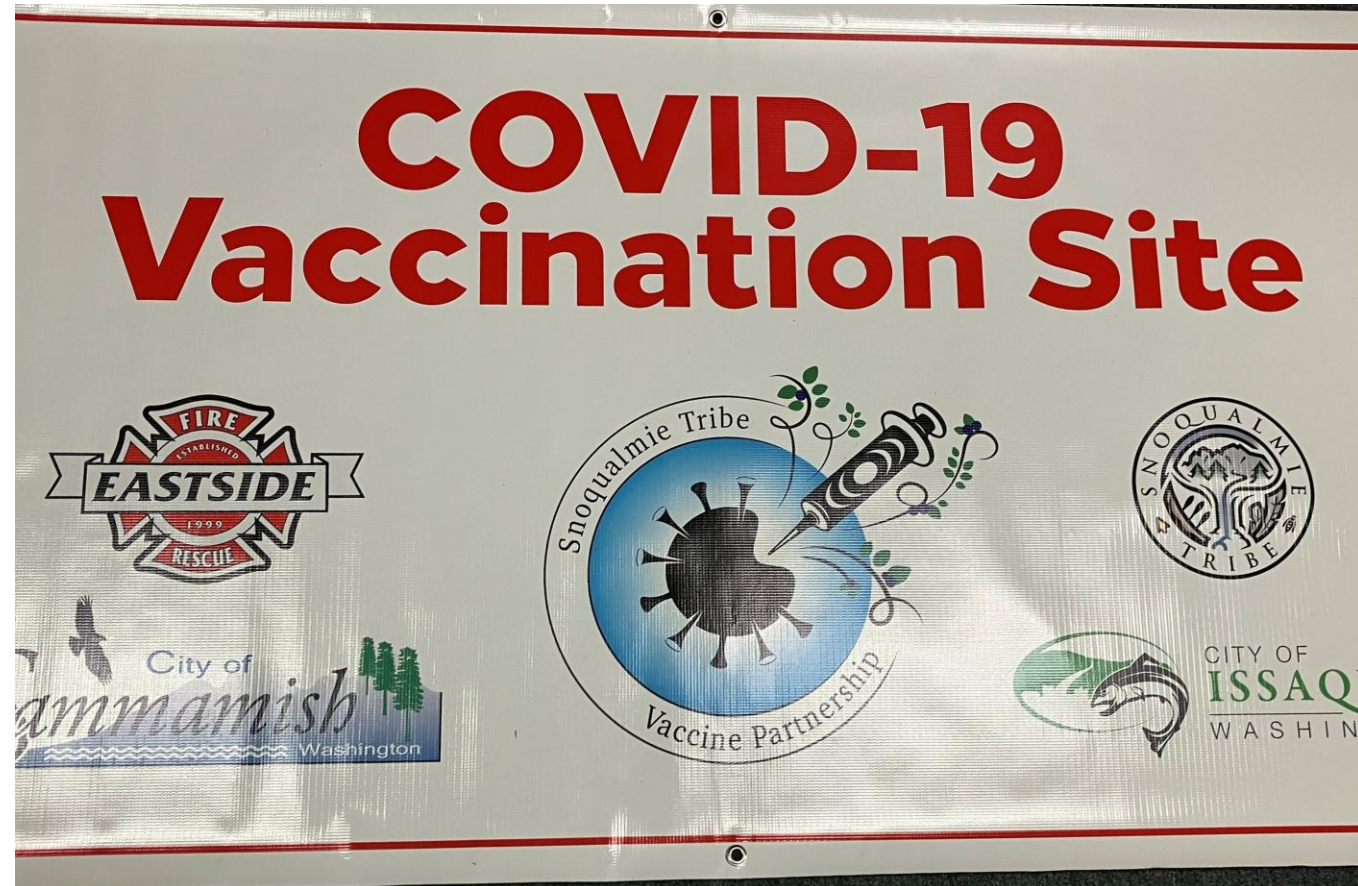
PROUDLY SERVING: ISSAQUAH, NORTH BEND, SAMMAMISH, THE SNOQUALAMIE TRIBE, MERCER ISLAND, FIRE DISTRICTS 10, 38, AND WOODINVILLE FIRE & RESCUE

Eastside EM

EM Staff added just before Covid

Initial focus:

- Covid
- Wildfire risk reduction
- Community preparedness
- EM was largely separate from agency operations



Excellence in Service • Dedication to Community

PROUDLY SERVING: ISSAQUAH, NORTH BEND, SAMMAMISH, THE SNOQUALMIE TRIBE, MERCER ISLAND, FIRE DISTRICTS 10, 38, AND WOODINVILLE FIRE & RESCUE

Eastside EM Pivot to Agency Preparedness

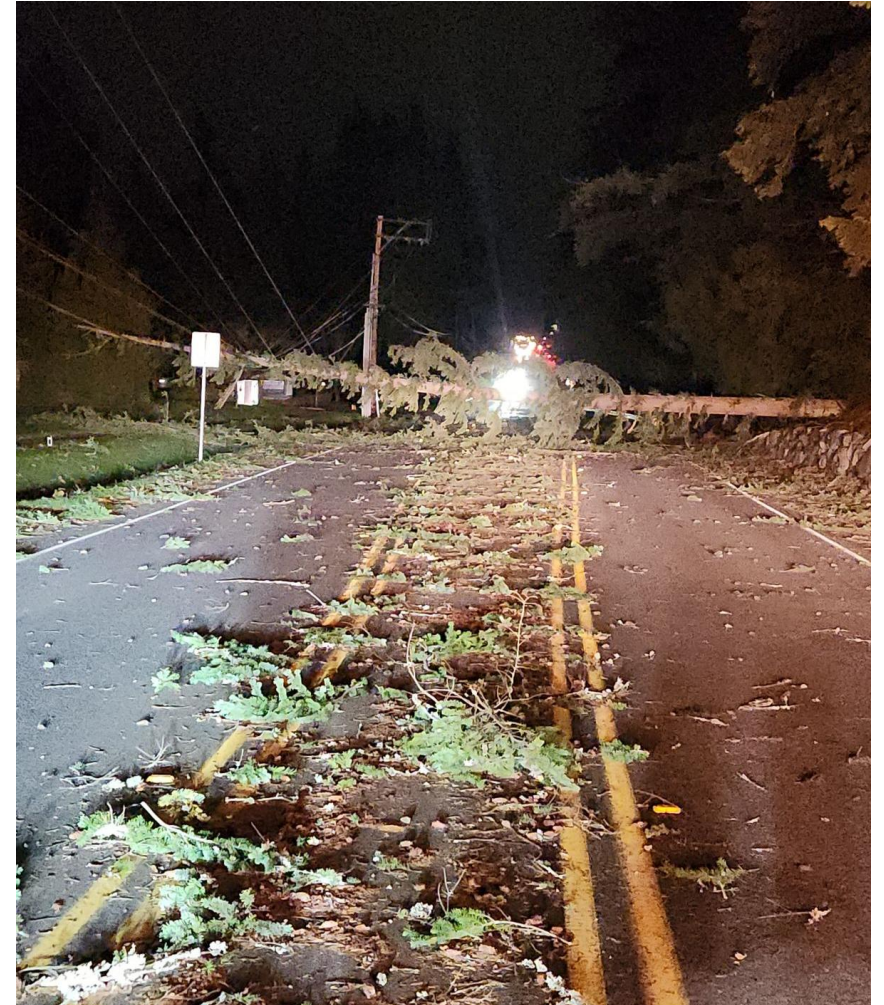
Agency continuity (supplies, fuel, and more)

Policies and procedures

- Tolt Dam checklist, facility security, general disaster plan)

Training – internal and with partner cities

Intentional connections - with cities and other partners



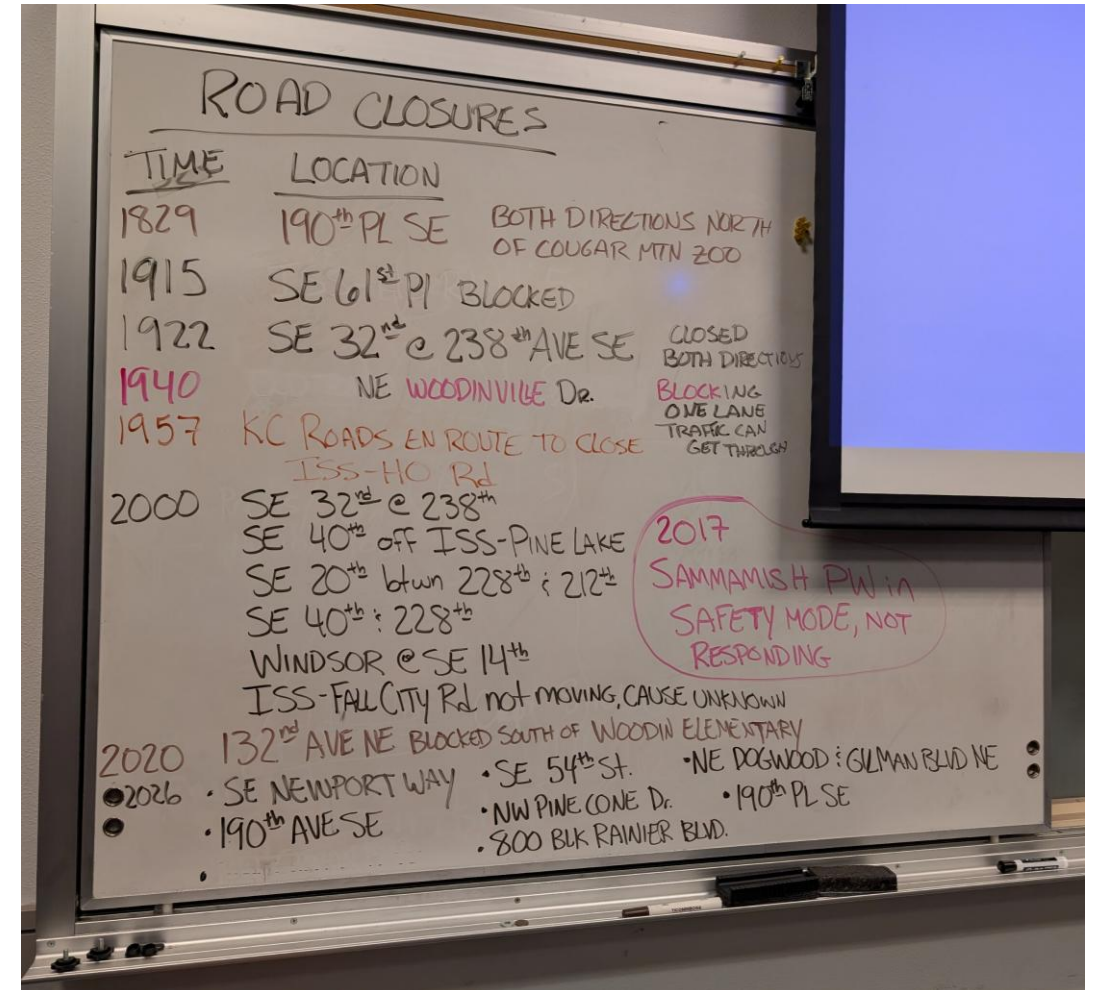
Excellence in Service • Dedication to Community

PROUDLY SERVING: ISSAQUAH, NORTH BEND, SAMMAMISH, THE SNOQUALAMIE TRIBE, MERCER ISLAND, FIRE DISTRICTS 10, 38, AND WOODINVILLE FIRE & RESCUE

Operational Challenges in Severe Weather and Disasters

How to:

- Manage a “resource emergency”
- Staff an EOC/ECC
- Maintain situational awareness across our service area



Excellence in Service • Dedication to Community

PROUDLY SERVING: ISSAQUAH, NORTH BEND, SAMMAMISH, THE SNOQUALAMIE TRIBE, MERCER ISLAND, FIRE DISTRICTS 10, 38, AND WOODINVILLE FIRE & RESCUE



Then in November 2024

It got a little windy



Excellence in Service • Dedication to Community

PROUDLY SERVING: ISSAQUAH, NORTH BEND, SAMMAMISH, THE SNOQUALAMIE TRIBE, MERCER ISLAND, FIRE DISTRICTS 10, 38, AND WOODINVILLE FIRE & RESCUE

Eastside - Incidents

	Incidents by Period and Hour of Day																								
	00	01	02	03	04	05	06	07	08	09	10	11	12	13	14	15	16	17	18	19	20	21	22	23	totals
typical day, one week prior			4		2	1		1	3	2	5	6	3	5	3	3	4	3	2	2		1			50
Storm - 19th																	8	18	24	56	40	48	31	23	248
Storm - 20th	9	7	6	6	8	11	18	27	15	14	5	7	5	13	10	8	13	11	7	15	6	6	4	7	238
typical day, several days later		3	3		1			1		1	3	5	5	3	4	3	1	5		4	2	5			49



Excellence in Service • Dedication to Community

PROUDLY SERVING: ISSAQUAH, NORTH BEND, SAMMAMISH, THE SNOQUALAMIE TRIBE, MERCER ISLAND, FIRE DISTRICTS 10, 38, AND WOODINVILLE FIRE & RESCUE

Eastside - Incidents

Prior:	11/12 16:00 - 11/13 16:00
Storm:	11/19 16:00 - 11/21 00:00
EOC:	11/19 16:00 - 11/20 16:00
After	11/26 16:00 - 11/27 16:00

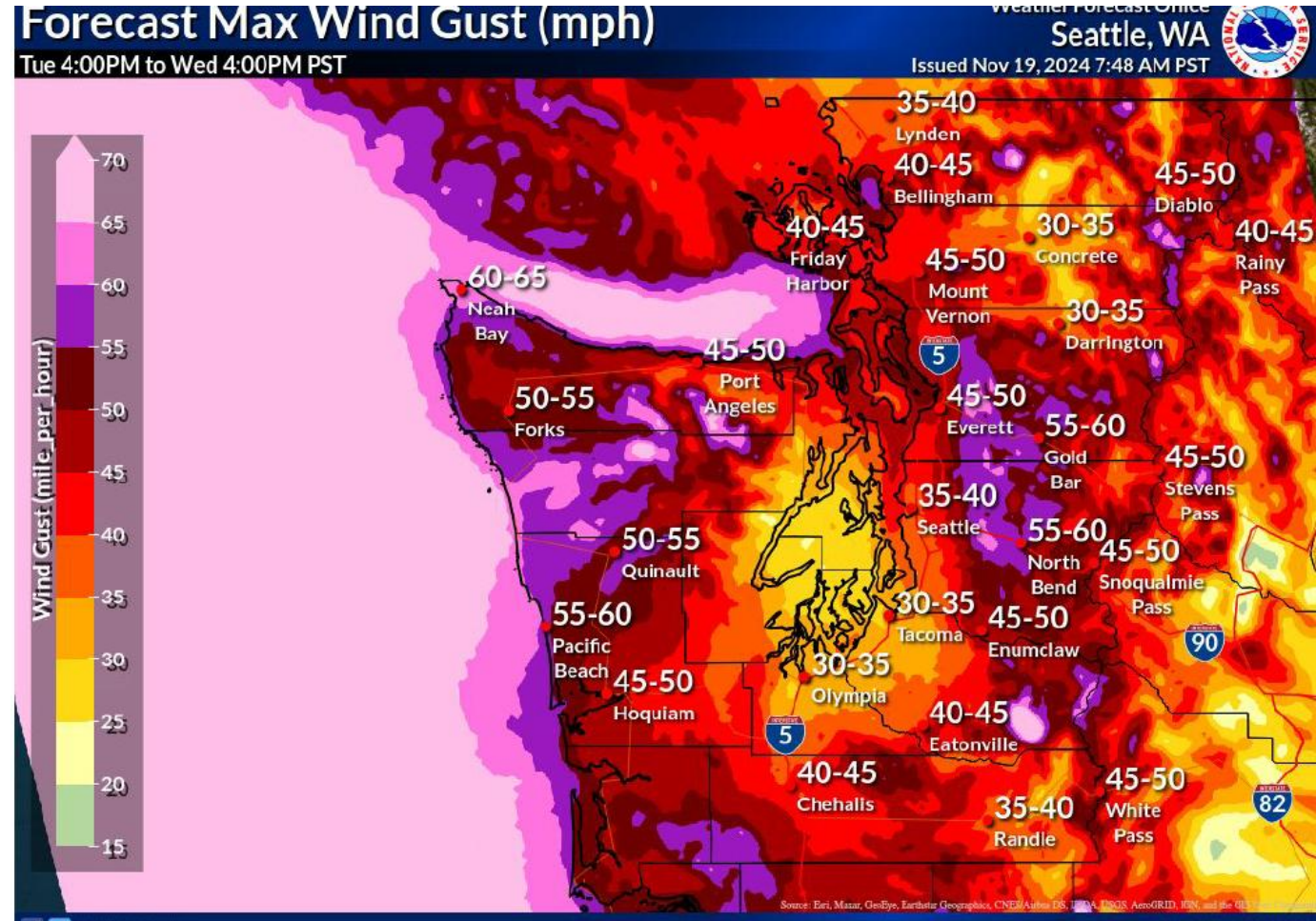
Zone-Wide		
Prior	Storm	After
233	1783	247
EFR Only		
Prior	Storm	After
50	486	49



Storm Preparation

Eastside EM:

- Advised Operations regarding forecasts
- IAP with Operations
- Brief chief officers and BCs
- In the EOC with Ops
- Coordinated with regional partners



Excellence in Service • Dedication to Community

PROUDLY SERVING: ISSAQUAH, NORTH BEND, SAMMAMISH, THE SNOQUALMIE TRIBE, MERCER ISLAND, FIRE DISTRICTS 10, 38, AND WOODINVILLE FIRE & RESCUE

Eastside - EOC

- BCs - Triage calls for service
- BCs - coordinate/monitor needs across our service area and region
- EM – coordinate/communicate with partner cities and KC OEM on conditions and needs



Excellence in Service • Dedication to Community

PROUDLY SERVING: ISSAQUAH, NORTH BEND, SAMMAMISH, THE SNOQUALAMIE TRIBE, MERCER ISLAND, FIRE DISTRICTS 10, 38, AND WOODINVILLE FIRE & RESCUE

Operational Adjustments

Resource Emergency =

- High priority calls dispatched
- Low priority calls held/not dispatched

Reduced Response =

- Fewer units sent



Excellence in Service • Dedication to Community

PROUDLY SERVING: ISSAQUAH, NORTH BEND, SAMMAMISH, THE SNOQUALAMIE TRIBE, MERCER ISLAND, FIRE DISTRICTS 10, 38, AND WOODINVILLE FIRE & RESCUE

Typical Windstorm Calls for Service

- Trees blocking
- Wires down
- Automatic fire alarms
- Flames seen
- Transformer fires
- Arcing wires



Excellence in Service • Dedication to Community

PROUDLY SERVING: ISSAQUAH, NORTH BEND, SAMMAMISH, THE SNOQUALAMIE TRIBE, MERCER ISLAND, FIRE DISTRICTS 10, 38, AND WOODINVILLE FIRE & RESCUE

Atypical Calls for Service

- Structure fires
- Rescues/people trapped
- Motor vehicle accidents
- And...
- Generator fires



Challenges Across Our Service Area

- Mirrormont “Every other home hit”
- Carnation PW staff trapped
- Impacts varied widely
- Eastside = 14 stations running on generator power



Excellence in Service • Dedication to Community

PROUDLY SERVING: ISSAQUAH, NORTH BEND, SAMMAMISH, THE SNOQUALAMIE TRIBE, MERCER ISLAND, FIRE DISTRICTS 10, 38, AND WOODINVILLE FIRE & RESCUE

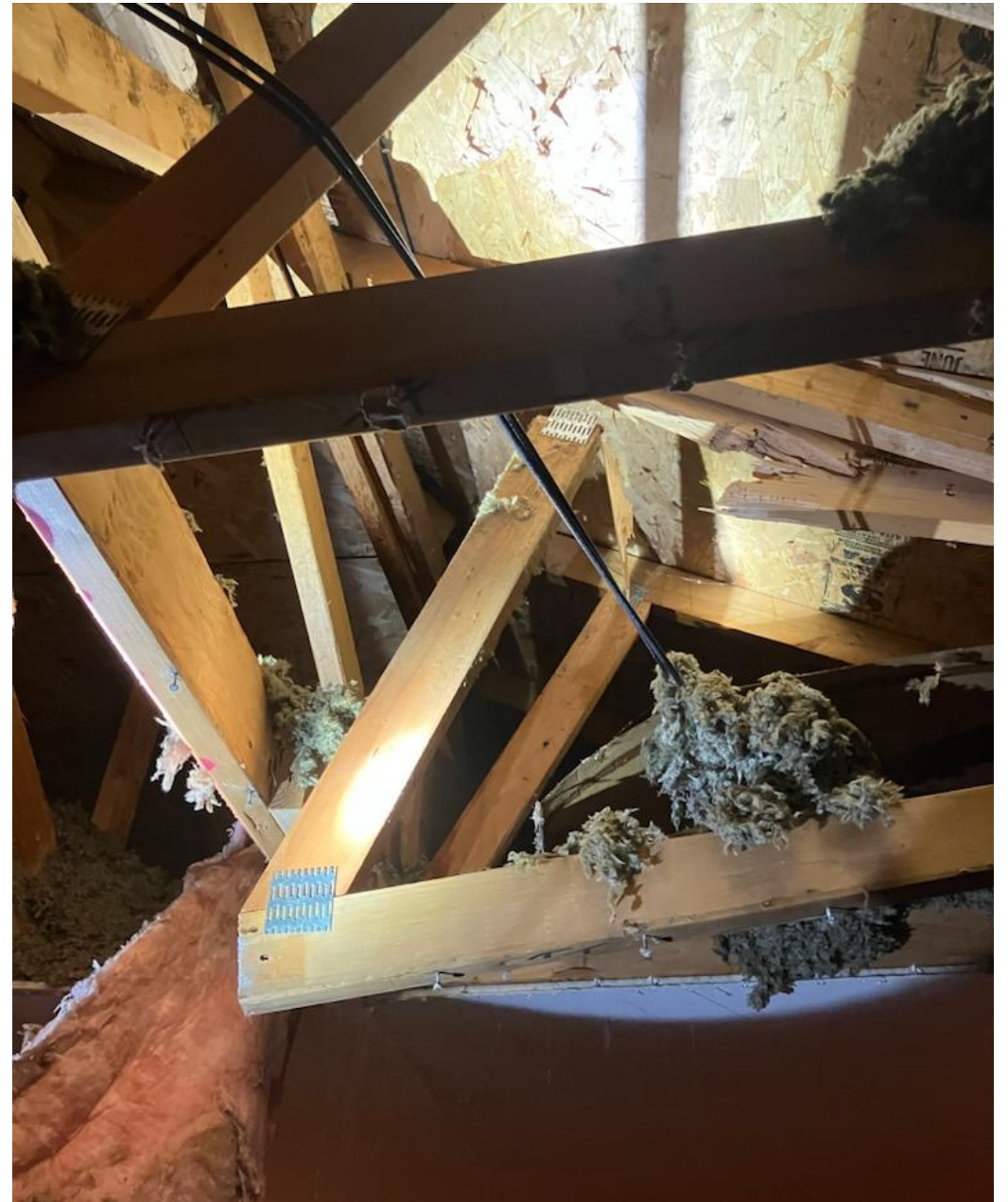
EM - After Action

- Met with shift BCs at 24 hr. mark
- Survey to all staff
- Met with cross section of responders
- Focused conversations with key people
 - People who had expressed concerns
 - People not heard in previous steps



After Action Focus

- What went well
- What could have been better
 - During the lead up to storm
 - During the storm
 - In subsequent days



The Good

- Upstaffed prior to storm
- Strong coordination between Ops and EM, EM and partner cities
- Communications
- No one was injured



Excellence in Service • Dedication to Community

PROUDLY SERVING: ISSAQUAH, NORTH BEND, SAMMAMISH, THE SNOQUALAMIE TRIBE, MERCER ISLAND, FIRE DISTRICTS 10, 38, AND WOODINVILLE FIRE & RESCUE

Improve

- Communications¹
- High wind procedures
- Resource Emergency – crews still dispatched to some low acuity calls
- Situational awareness (mainly closed roads)
- Coordination with PSE
- Internet connections
- Logistics/fuel
- Extend EOC operations



1) yes, Communication is on both lists!

EM – Value to Agency

- Monitor and interpret changing forecasts
- Support Operational decisions
- Staff EOC
- Maintain situational picture
- Liaison with Cities
- Identify regional resources

INCIDENT OBJECTIVES (ICS 202)

1. Incident Name: November 2024 Windstorm	2. Operational Period: Date From: 11/19/2024 Date To: 11/20/2024 Time From: 1200 Time To: 1200
3. Objective(s): <ul style="list-style-type: none">- Ensure safety of Eastside Fire responders and support staff and the community.- Prepare for windstorm operations (staffing, secure facilities to reduce potential damage, request needed supplies) prepare apparatus, ensure all PPE is ready.- Upstaff personnel and apparatus based on DC of Special Ops.- Plan on movement of Aid 181 to Station 83 due to power loss and crew safety.- Adhere to KC Fire Model Procedure Section 18 – Windstorm Operations (attach)- Monitor forecast and adjust plans as needed. Hourly weather updates during resource emergency shall be provided by EM to Operations.- Prepare to operate in a Resource Emergency, consider going into Resource Emergency early. The Dept Coordination Center (DOC) will be located at Station 31 classroom, providing generator, TV's, whiteboards, copier, tables, option for Ham radio.- Coordinate with partner agencies to ensure resource deployment is effective and non-emergency service responses are handled by home agencies.- Prepare to limit response due to significant wind to ensure responder safety.	
4. Operational Period Command Emphasis: <p>Safety – have all response personnel as well as shop and facilities staff review high wind procedures. All PPE will be worn and verified in place by the company officer/Battalion Chief or supervisor. If power is out and limited light, ensure crews have a upstream lookout for vehicles and utilize effective traffic control measures to allow for early identification of crews working.</p>	



Excellence in Service • Dedication to Community

PROUDLY SERVING: ISSAQUAH, NORTH BEND, SAMMAMISH, THE SNOQUALAMIE TRIBE, MERCER ISLAND, FIRE DISTRICTS 10, 38, AND WOODINVILLE FIRE & RESCUE

Questions?

Eastside Fire & Rescue

Cat Robinson

Greg Bawden



Artist recreation of the Bomb Cyclone sneaking up on Issaquah



Excellence in Service • Dedication to Community

PROUDLY SERVING: ISSAQUAH, NORTH BEND, SAMMAMISH, THE SNOQUALAMIE TRIBE, MERCER ISLAND, FIRE DISTRICTS 10, 38, AND WOODINVILLE FIRE & RESCUE

Extra pictures



Excellence in Service • Dedication to Community

PROUDLY SERVING: ISSAQUAH, NORTH BEND, SAMMAMISH, THE SNOQUALAMIE TRIBE, MERCER ISLAND, FIRE DISTRICTS 10, 38, AND WOODINVILLE FIRE & RESCUE